



reseller

CAR TOOL INDIA

www.cartoolindia.com

+91-9109565095 | +91-9301790431

INNOVATIONS 26.1

CV
COMMERCIAL
VEHICLE

AGV
AGRICULTURAL
EQUIPMENT

OHV
OFF-HIGHWAY
EQUIPMENT

MHE
MATERIAL
HANDLING

marine
VESSELS

SOFTWARE INNOVATIONS

GRP WEB, the new DMS platform for managing your workshop

Your workshop management, now 100% online

The GRP application evolves from your desktop to a **more powerful, accessible and flexible web portal**.

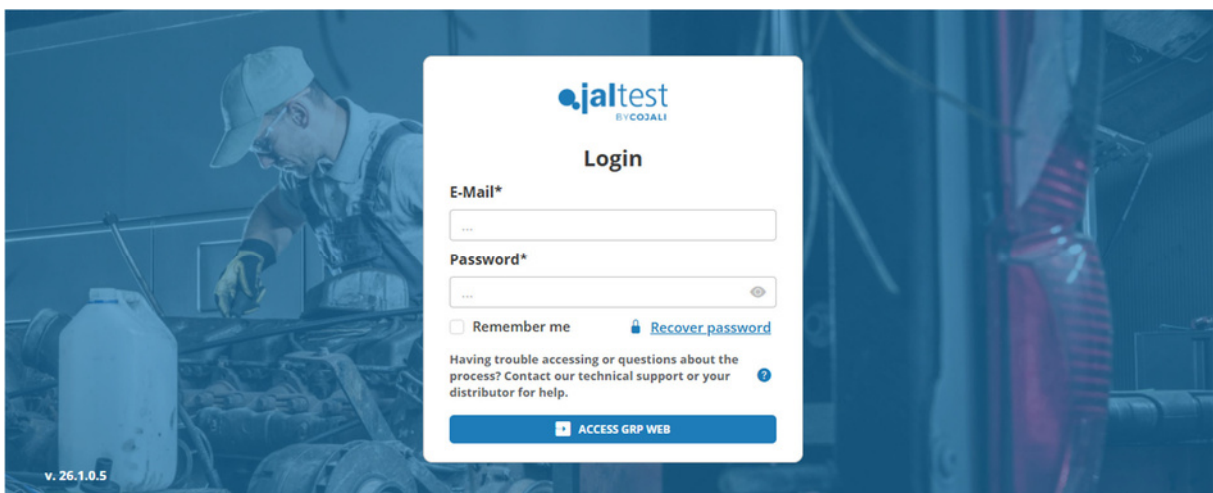
- Access from anywhere, without installations.
- All GRP functionalities and new enhancements in a single environment.
- Guided configuration with intelligent assistant.
- Customisation and configuration according to your needs.
- Agile management of users, company data and work orders.

More freedom. More control. More productivity.

These credentials will be used in the future to **facilitate the identification of users** in the workshop under the **new cybersecurity regulations** implemented by manufacturers in the new generations of commercial vehicles.

Discover the new **Jaltest GRP Web** experience. Click on the link to access: <https://grp.jaltest.com/en/login>

Access from the Jaltest Diagnostics software is also available through the button located in the same place as in previous versions.



OTHER SOFTWARE INNOVATIONS

- New improvements in unattended upgrades supporting new possible scenarios; language package installations, support for intermediate upgrades and data backup import.
- Adaptation of Jaltest Link V9 device drivers to new vehicle and communication architectures.
- Service improvements and support to Jaltest Central Services.

Take into account that this document is only a summary of the most relevant information of this new version. For further information, please visit Jaltest Report or Jaltest website coverage.

BRANDS AND MODELS

Some of the models added in this version are listed below.

TRUCK

BYD

T9R

DAF

LATAM market models such as, for example:

XF105 (P7/E5) Latin America

CF GR (P7/E5) Latin America

XF MX-13 (P8/E6) Latin America

CF PX-7 (P8/E6) Latin America

HINO

SM / 200 Series [2022 - ...]

RANGER/500 Series (2DG/2KG/2PG) [2017 - ...], engine: A09C

ISUZU

F Series/FORWARD, engine: DB6A

F Series/FORWARD (2KG/2PG/2RG) [2023 - ...], engine: 4HK1

N Series/ELF (2TG) [2023 - ...], 4JZ1 engine

IVECO

S-Way [2024 - ...]

T-Way [2024 - ...]

X-Way NP (Natural Power) [2024 - ...]

Eurocargo Euro6-E [2024 - ...]

MERCEDES-BENZ

⊕ Actros5(963/964)[2024 - ...]

SCANIA

⊕ New P Series SUPER/P Series SUPER Euro 6 [2024 - ...]

⊕ New G Series/G Series Euro 6 [2024 - ...]

⊕ New R Series SUPER/R Series SUPER Euro 6 [2024 - ...]

⊕ SSeries/SSeries Euro 6 [2024 - ...]

UD TRUCKS

Kuzer,engine:GH4E

BUS

HYUNDAI/KIA

UNIVERSE,engine:D6C

MAN

32C / 33C / 34C Lion's4 City LE (12m - 13m - 14m) [2024 - ...]

R07 [2024 - ...]

R10 Lion's Coach (13 m) [2024 - ...]

R61 C (UEL Intercity 13m) [2024 - ...]

RC2 (LE 19.xxx) [2024 - ...]

RR2 (CO 19.xxx) [2024 - ...]

RR4 (CO 26.xxx) [2024 - ...]

RR8 (IC 19.xxx) [2024 - ...]

LIGHT COMMERCIAL VEHICLE

CITROËN

Berlingo 2.0HDI (M59) [2002 - 2008], engine: RHY

Nemo1.4 HDi(A9)[2008 - 2015], engine: 8HS

FORD

TransitConnect/Courier2.0 [2024 - ...], engine: DTRF/DXRD/DXRA

ISUZU

D-Max1.9DieselV-Cross[2024 - ...], engine: RZ4E-TC BS-VI Stage II

eCitan [2021 - ...],engine:780.690

MERCEDES-BENZ

Citan 1.5 CDI [2021 - ...], engine OM 608

CanterFESeries[2021-...],engine: 4P10 Euro 6E

Citan 1.3 TCE [2021 - ...], engine: M 200

PEUGEOT

Bipper 1.4 HDi (A9)[2008 - 2018], engine: 8HS

VOLKSWAGEN

Partner 2.0 HDi (M5)[2002 - 2006], engine: RHY

Amarok 3.0 TDI [2022 - ...], engine: DXWB

Amarok 2.0 TDI [2022 - ...], engine: DXKA/DXKB/DXKD

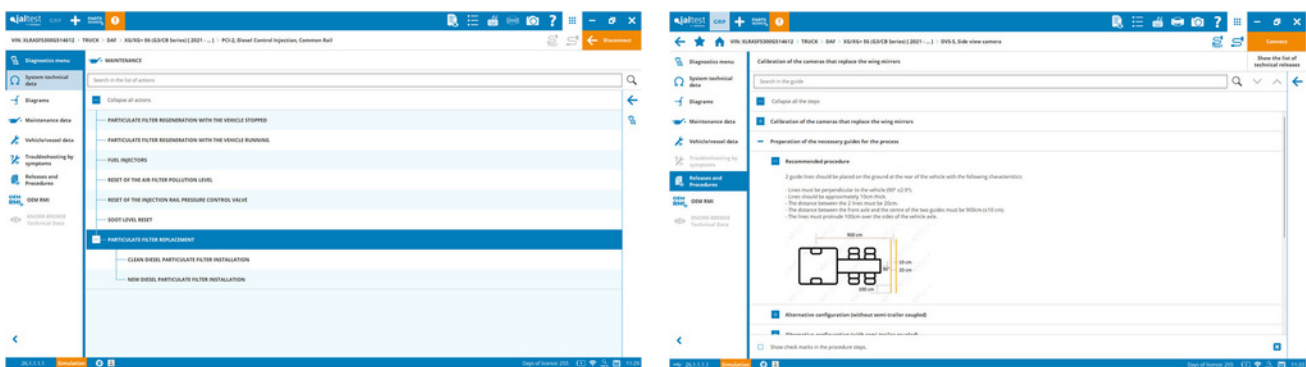
DIAGNOSTICS AND SYSTEMS

TRUCK AND BUS

DAF

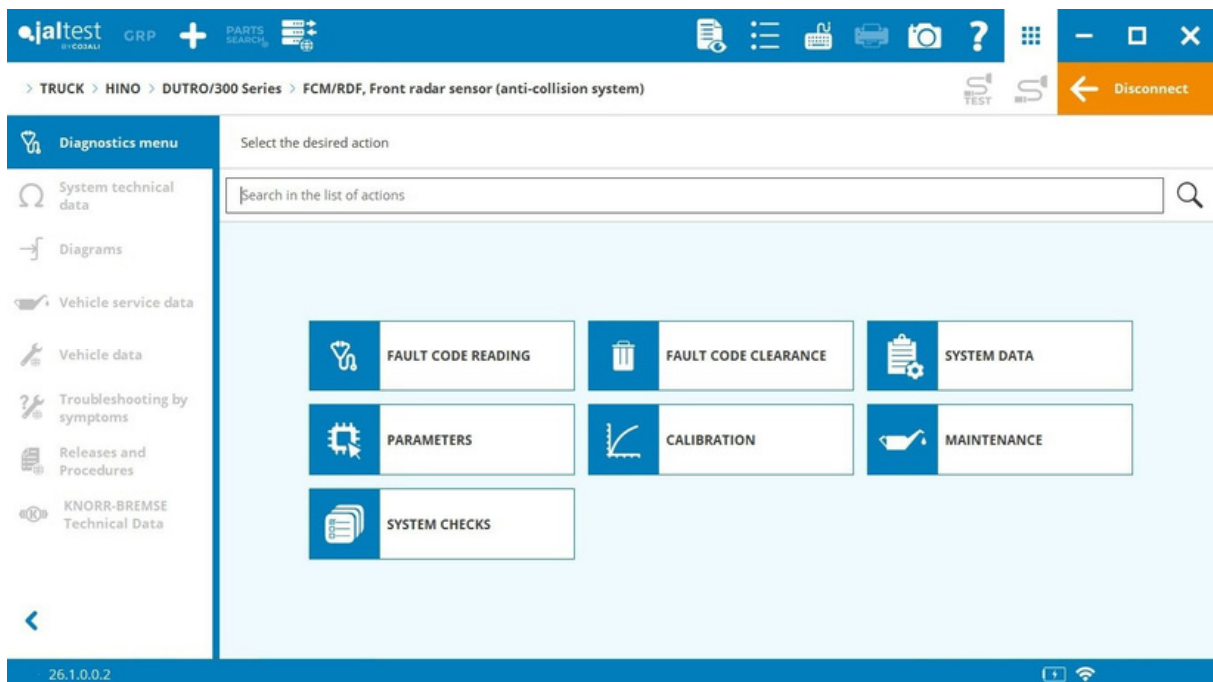
PCI-2 engine control system, diesel particulate filter replacement.

DVS-S side view cameras, calibration procedure.



HINO

FCM/RDF front radar sensor, parameter configuration and camera calibration in **DUTRO 300/RANGER 500/PROFIA 700** models.



Systems in **DUTRO 300/RANGER 500/PROFIA 700** models, and **BUS**:

- ⊕ **RDF** front radar sensor.
- ⊕ **ESSF** collision avoidance system.
- ⊕ **SCU** steering control system.
- ⊕ **Inverter** electric inverter control system.
- ⊕ **SKIM** immobiliser control system.
- ⊕ **EHPS** electro-hydraulic steering control system.
- ⊕ **TCCM** transfer case control system.

Among other safety systems, suspension, central computers and driver assistance systems.

Systems in the **SM / 200 Series** model:

- ⊕ **RDF** front radar sensor.
- ⊕ **ESSF** collision avoidance system.
- ⊕ **FCM** driver assistance camera.
- ⊕ **A/C** climate control system.
- ⊕ **EDC 5.0** engine control system.
- ⊕ **LDWS** lane departure warning assistant.
- ⊕ **ABS** anti-lock braking system.
- ⊕ **AHB** lighting control system.
- ⊕ **PCS** collision avoidance system.

HYUNDAI/KIA

- ⊕ **EDC D6CG** engine control system for **UNIVERSE** bus and **XCIENT** truck models.

The screenshot shows the jaltest diagnostic software interface. At the top, there is a navigation bar with the jaltest logo, user information (GRP), and various tool icons. Below this, a breadcrumb trail reads: > BUS > HYUNDAI > UNIVERSE, engine: D6CG > EDC D6CG, Electronic Diesel Control. A 'Disconnect' button is visible in the top right corner. On the left, a 'Diagnostics menu' sidebar lists options: System technical data, Diagrams, Vehicle service data, Vehicle data, Troubleshooting by symptoms, and Releases and Procedures. The main area is titled 'Select the desired action' and contains a search bar. Below the search bar, there is a grid of diagnostic actions: FAULT CODE READING, FAULT CODE CLEARANCE, SYSTEM DATA, OPERATION DATA, MEASUREMENTS, CALIBRATION, MAINTENANCE, ACTUATE COMPONENTS, and SYSTEM CHECKS. A 'DATA RECORDER' button is located at the bottom left of the main area. The version number '26.1.0.0.2' is displayed at the bottom left of the interface.

ISUZU

Development of new systems for the Japanese market.

ABS/ESC anti-lock hydraulic braking system, new references and variant control for **N Series/ELF [2024-...]** truck models, **engine: 4JZ1/RZ4E**.

Mimamori electronic module, fault code clearance.

⊕ **4JZ1/RZ4E** engine control system and **EDU** injection control system in **N Series/ELF [2024-...]** models, **engine: RZ4E-E6D, 4JZ1-E6N**.

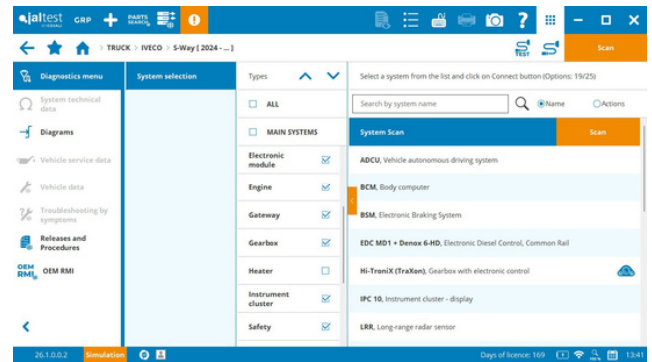
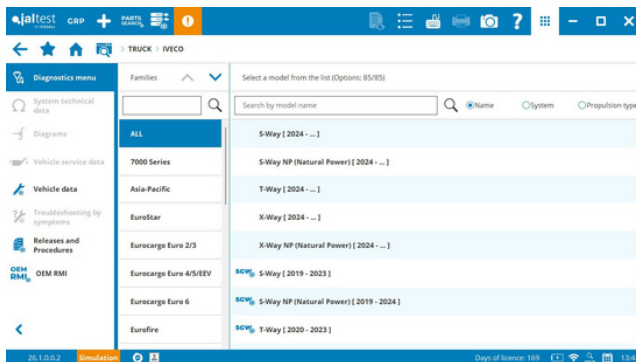
Systems in the new **F Series/FORWARD** model, **engine: DB6A**:

- ⊕ **DB6A** engine control system.
- ⊕ **ASM** suspension management system.

IVECO

Systems in 2024 models:

- ⊕ **EDC MD1** engine control system.
- ⊕ **VCM4** vehicle central computer.
- ⊕ **IPC10** instrument cluster.
- ⊕ **sBSP BSM** Wabco brakes.
- ⊕ **ADCU, LRR, SRR2, SRR4, SRR5** safety systems and radars.
- ⊕ **MCSL, MCSR, MCDS** cameras and screens for rear-view mirror replacement.
- ⊕ **TPMS** tyre pressure monitoring system.



MAN

Special **Hydrodrive** traction system in **TG3** models, including measurements and component activation.

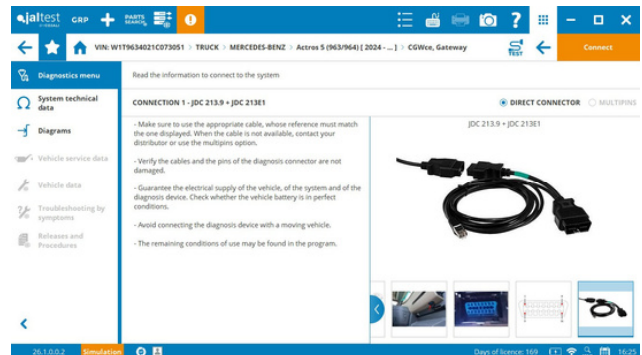
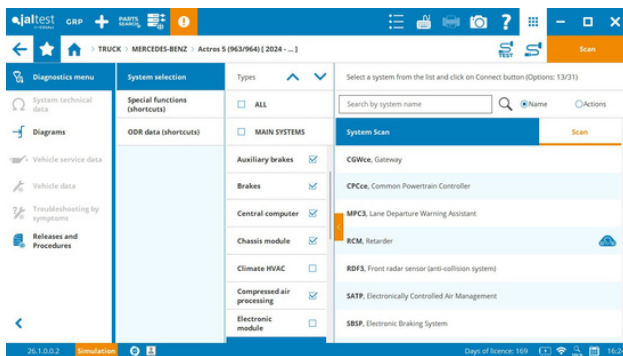
including measurements and component activation.

MERCEDES-BENZ

System developments in the new DoIP protocol in **2024 Actros and Arocs** models:

- ⊕ **CPCce** vehicle central computer.
- ⊕ **CGWce** Gateway central computer.
- ⊕ **SBSP** electronic brake system.
- ⊕ **SATP** compressed air generation system.
- ⊕ **MPC3, RDF3, VRDU3** safety systems.

Important: The new **JDC 213E1** cable is required to connect to these systems. Please, contact your distributor for purchase.



Systems for bus:

- ⊕ **EAM3** Multiplex3.
- ⊕ **EAM4** Multiplex4.

MITSUBISHI FUSO

EDC 4M50 engine control system, new measurements and component activation in **Canter** truck and **Rosa** bus models.

EDC 6M60 and 6M70 engine control system, component activation in **Fighter** and **Heavy** truck models.

CPC3 powertrain controller, parameters in **Shogun/Super Great** truck and **Aero Star** and **Aero Ace/Queen** bus models.

New systems related to **Shogun/Super Great** models, **engine: 6R30** and **Canter, engine: 4P10**.

RENAULT

In vehicles with V4 technology:

TECU transmission, parameter configuration of the starting gear selection.

EMS engine control system, maintenance service for AdBlue/DEF crystallisation clearance present in the SCR catalytic converter.

In vehicles with V3 technology:

⊕ **VECU5 Service** maintenance system which includes the resets of the engine oil change and the gearbox oil change.

SCANIA

DIS3 distance sensor, calibration in **New P, G, R and S Series SUPER, New R Series and S Series** models of 16 litres.

Main systems for **[2024 - ...]** truck models:

- ⊕ **EMS10** engine control system.
- ⊕ **AMS2** emission treatment system.
- ⊕ **TMS3** transmission.
- ⊕ **APS** compressed air production management.
- ⊕ **COO11** coordinator.
- ⊕ **FLC3** driver assistance camera.
- ⊕ **BMS EBS** brake management system.
- ⊕ **SMS-ELC4** suspension management system.

Important: The new **JDC 213E1** cable is required to connect to these systems. Please, contact your distributor for purchase.



VOLKSWAGEN

In **Volksbus Euro 6** models, wiring diagrams for the **EDC ASM2020** engine control system and the **BSG** central computer.

VOLVO

In vehicles with **V4 technology**:

⊕ **BLECU** lighting system for truck.

Systems for electric truck models:

- ⊕ **AVAS** sound generator for electric vehicles.
- ⊕ **EVAC** compressed air production management.

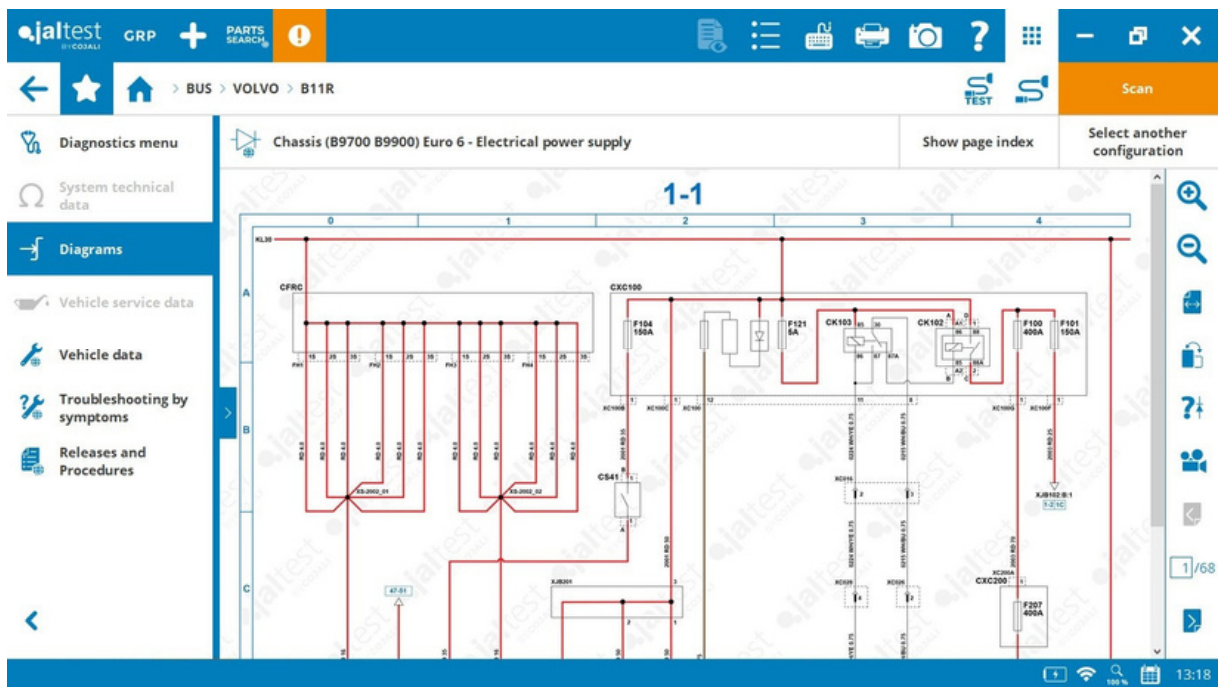
In vehicles with **V3 technology**:

Systems for bus:

- ⊕ **IC GFX** graphic processor.
- ⊕ **REM** entertainment system control module.
- ⊕ **BIO** electronic module.
- ⊕ **BIM** bodywork module.

Wiring diagrams by model for **B11R** bus.

Information available with the subscription of the new technical data module 'Jaltest INFO Plus'.

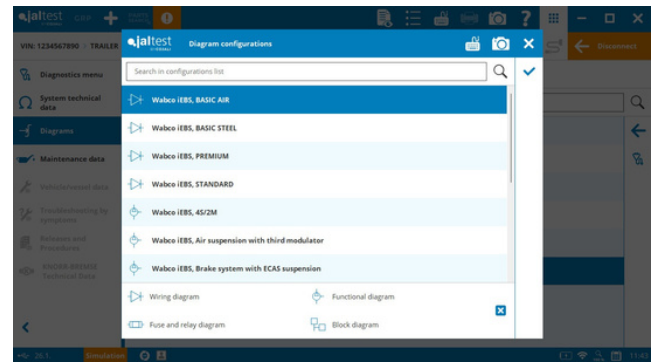
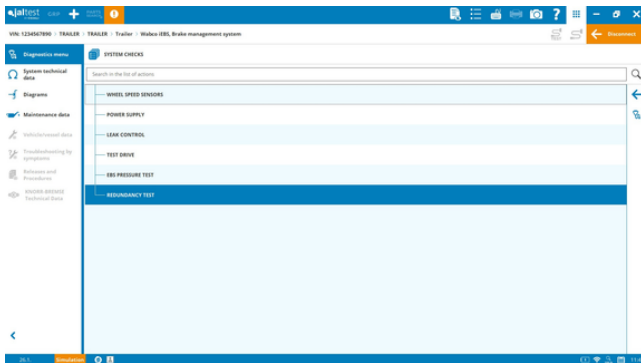


TRAILER

WA B CO

Development of the new E7 variant in the **EBS E** brake control system.

iEBS brake control system, actuations and system checks. Component technical information and operating and wiring diagrams are included.

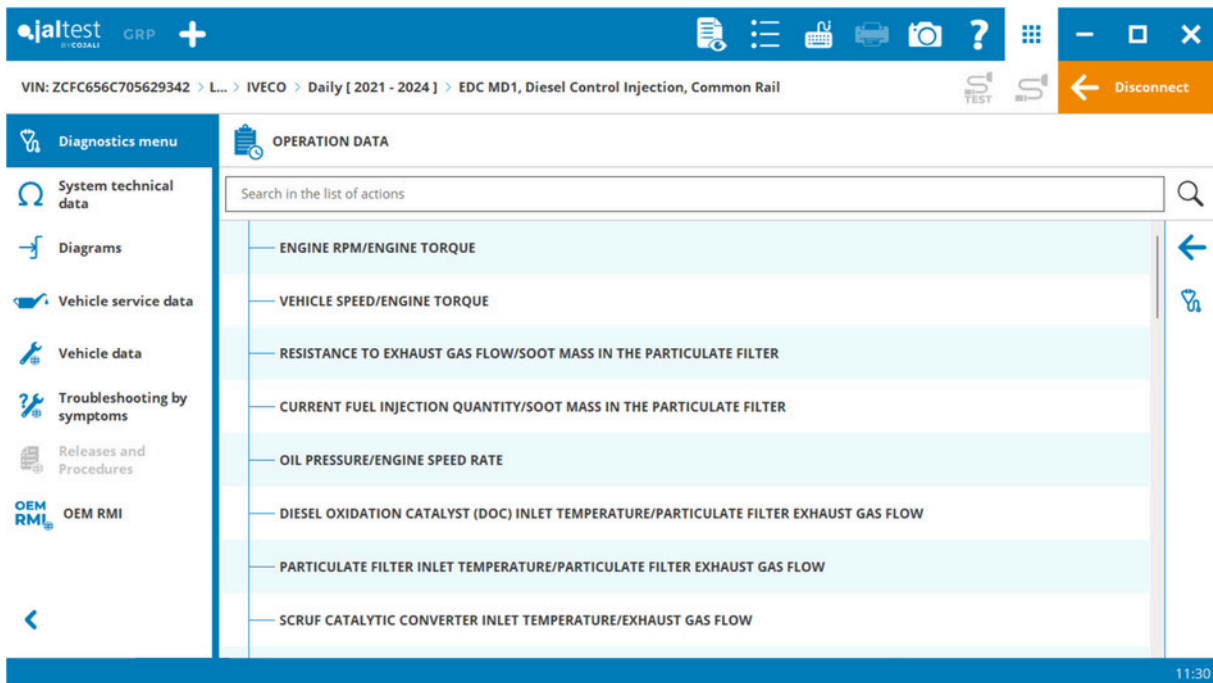


LIGHT COMMERCIAL VEHICLE

IVECO

Newsystems in the **Daily MY2024** model.

EDC MD1 engine control system, operation data.



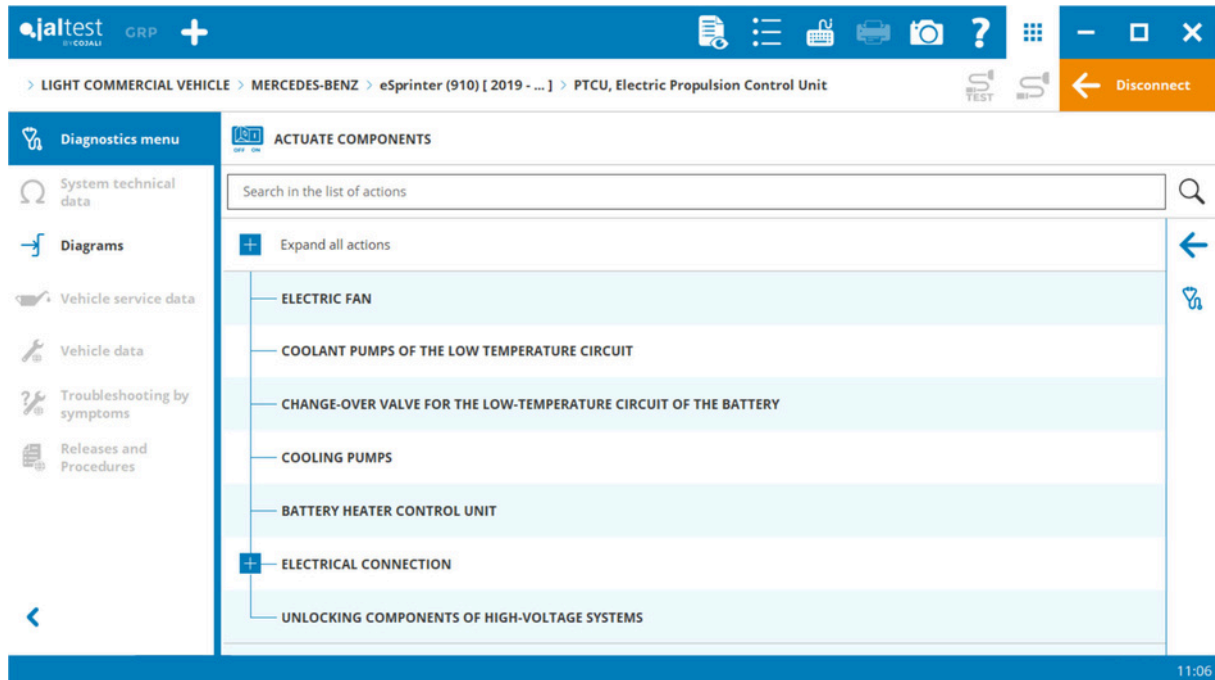
Wiring diagrams by model for **Daily MY2012 (Diesel & CNG)**.

Information available with the subscription of the new technical data module 'Jaltest INFO Plus'.

MERCEDES-BENZ

New functionalities and systems in the **e-Sprinter 910, e-Vito** electric models:

- ⊕ **OBC** system.
- ⊕ **DC/DC Converter** system.
- ⊕ **AVAS** system.
- ⊕ **PTCU** system.



DCT 7G automatic transmission related to new **Citan Serie W420** models.

STELLANTIS

DCM6.2+SCR engine control system, additive system checks (cerium).

New systems for small and medium-sized models (**Berlingo, Partner, Proace City, Doblò, Combo E, Jumpy, Expert, Vivaro C, Scudo**).

VOLKSWAGEN

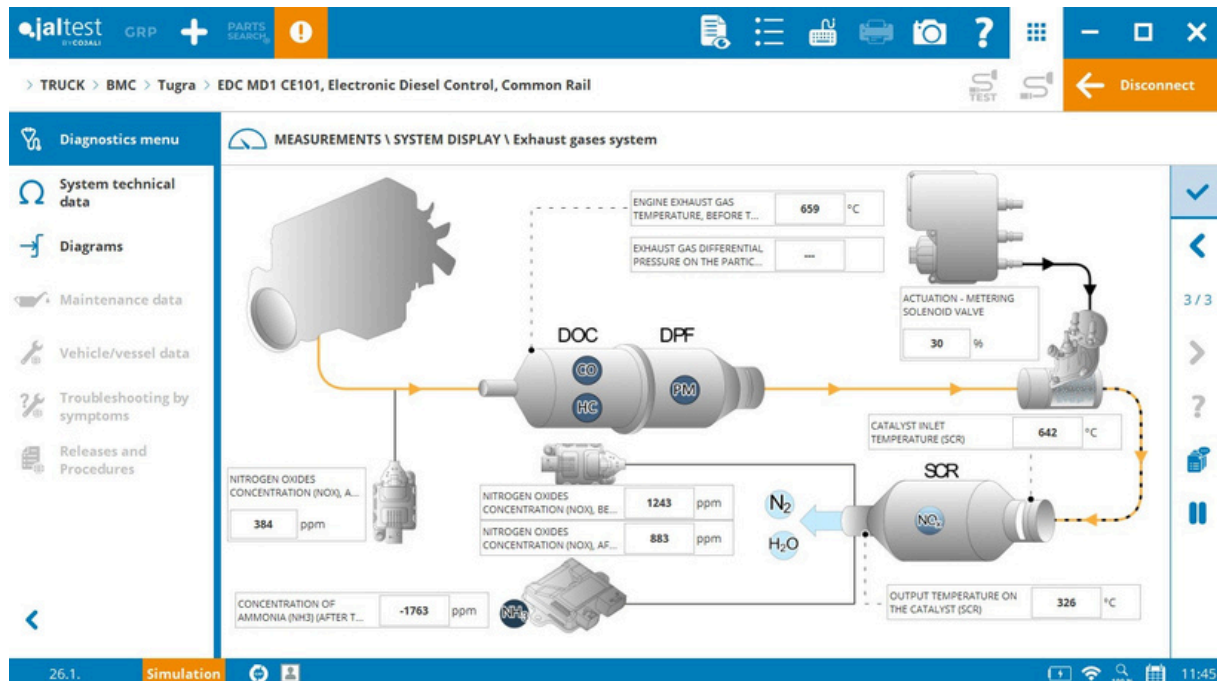
New hybrid/electric vehicle management systems for the **Multivan T7 1.4 e-Hybrid (STM/STN) [2022 - ...]** model, **engine: DGEA**.

MANUFACTURER

IVECO FPT

System Display of fuel system, AdBlue/DEF module and exhaust gas system.

EDC MD1 CE101 engine



WEICHAI

In vehicles with **Euro 4/5 technology**:

⊕ **WISE 12A** engine control system installed in trucks and buses of different Chinese brands such as CNHTC-SINOTRUK, KING LONG, XCMG, SHACMAN, TRI-RING, among others. The system includes reading and fault code clearance, measurements, activations and other checks.

